



PT JAS AERO ENGINEERING SERVICES

Safety, Quality and Reliability

MARKETING & CUSTOMER RELATIONS DEPARTMENT

Wisma Soewarna 1st Floor
Soekarno Hatta International Airport
Tangerang 15126 - INDONESIA

T. +62 21 5591 1671 - 73
F. +62 21 5591 3025
E. jae.marketing@jas-aero.com
W. www.jas-aero.com

OUR COMPANY

Our company is focusing on Quality and Safety through Safety Management Systems (SMS) implemented in 2010; Training by Approved Maintenance Training Organization (AMTO) 147; Recurrent Training by Internal and Airlines Operator; Continuing improvement to meet best industries practices; Integrated Quality Program (IQP) and Enhanced Safety Through Human Error Reduction (ESTHER) implemented in 2014

We have seamless coordination and communication from Maintenance Control Centre (24/7) and Production Control for short term task

Being part of SIAEC Line Maintenance International network, JAE will provide consistent services with best practice and highest quality



Vision

To be the best preferred aircraft maintenance services company and aircraft supporting provider in Indonesia for domestic and international airlines

&

Mission

To deliver the highest quality standard and consistency of services for customer satisfaction.

BACKGROUND



PT Cardig Aero Services TBK (CAS Group) is a leading company which engaged in Air Transportation Support, Food Solution and other related services in Indonesia



**SIA ENGINEERING
COMPANY**

SIA Engineering Company is a leading aircraft maintenance, repair and overhaul (MRO) company in Singapore



**JAS AERO
Engineering
2003**

MANAGEMENT



WERRY ORBANI
President Director & CEO
(CAS)



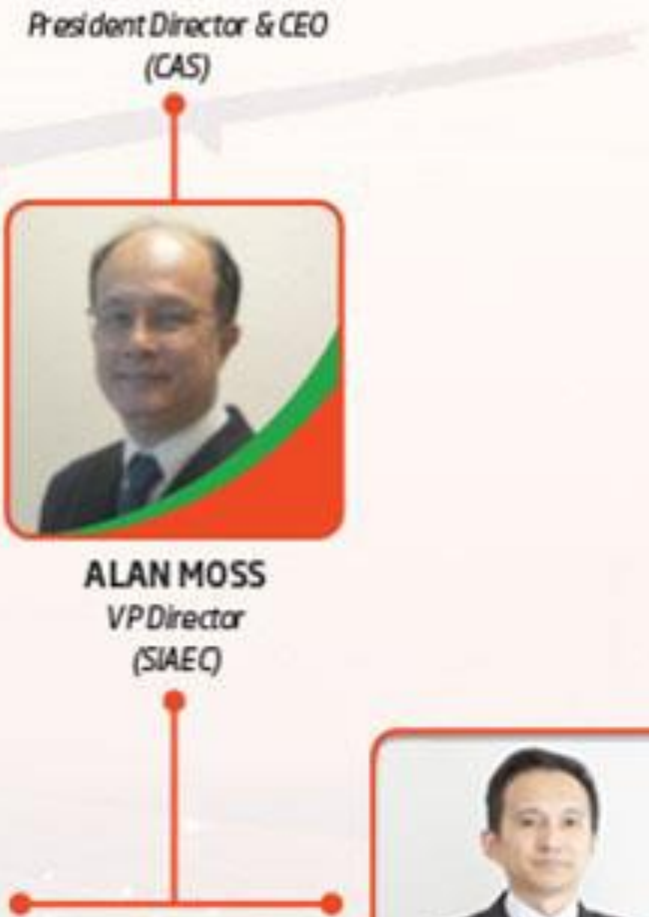
ALAN MOSS
VP Director
(SIAEC)



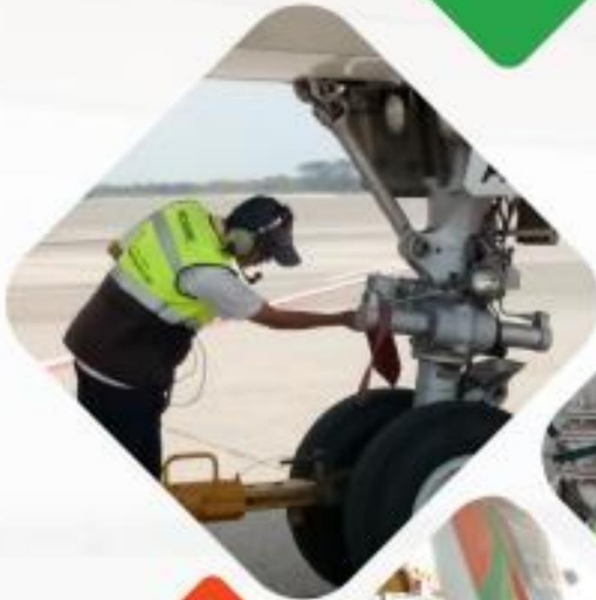
ANTONI SIMANJUNTAK
Finance Director
(CAS)



FRANKIE TEOH
Operation Director
(SIAEC)



SERVICES



- CERTIFICATION
- TECHNICAL RAMP
- DEFECT RECTIFICATION
- GROUND SUPPORT EQUIPMENT
- A CHECK (A320)
- MONTHLY CHECK (B777)
- BONDED STORE (CGK, DPS & SUB)
- CABIN MAINTENANCE SWEEP
- AIRCRAFT EXTERIOR/
INTERIOR CLEANING
- CARPET DEEP CLEANING
- RESIDUAL DISINSECTION
- WHEELS AND BRAKES SERVICE
- NDT INSPECTION
- BORESCOPE SERVICE

CAPABILITIES



ENGINE

Rolls Royce Trent 500
Rolls Royce Trent 700
Rolls Royce Trent 800
Rolls Royce Trent 900
Rolls Royce Trent 1000
Rolls Royce Trent XWB
CMF LEAP 1A/1B
CMF 56-3/5/7 Series
CF6-80 E1 Series
CF6-80 C2 Series
GE 90 Series
Genx Series
Gp7200
PW 1100 Series
PW4000 Series
IAE V2500 Series
RB211-535E4

AIR FRAME

A310
A318/A319/A320/A321
A320 NEO/A321 NEO
A330-200-300
A350
A380
B737 CLASSIC
B737 NG
B737 MAX
B757-200/300
B747-400/400F
B767-200/300
B777-200/300/300ER
B787-8/9/10

APPROVALS



15

AUTHORITIES

- DGCA INDONESIA
- FAA - EASA - CAAS - CASA
- CAAM - CAAP - CAAT - CAASL
- GACA - MOLIT
- UAE GCAA - QCAA - DGCA TURKISH
- PACA

10

AIRLINES
QUALITY

- EMIRATES - A330/B777/A380
- ETIHAD - A330/B777
- JETSTAR INTERNATIONAL - A320/A321/B787
- JETSTAR ASIA - A320
- ROYAL BRUNEI - A319/A320
- TURKISH AIRLINES - A330/B777
- AIR NEW ZEALAND - B787-9
- THAI AIRWAYS - A320/A330/B747/B777/B787
- INDONESIA AIR ASIA - A320
- AIRASIA X - A330

STATION CAPABILITY

STATION	CERTIFICATION	RAMP	GSE	W&B	Bonded Store	REMARKS (ENGINEER CAPABILITY)
CGK	✦	✦	✦		✦	A31Q, A319/320, A320X321NEO, A330, A340, A350, A380, B737NG, B747, B757, B767, B777, B787
DPS	✦	✦	✦		✦	A319/320, A320X321 NEO, A330, A340, A350, B737NG, B737MAX, B767, B777, B787
SUB	✦	✦	✦		✦	A319/320, A320NEO, A330, B737NG, B737MAX, B777
KNO	✦	✦	✦		✦	A319/320, A320 NEO, B737NG, B737 MAX
JOG	✦	✦	✦			A319/320/A320NEO, B737NG
UPG	✦	✦	✦	✦		A319/320, A320NEO, B737NG
SOC	✦	*				A319/320/A320NEO, B737NG
BDO	✦	*				A319/320, A320NEO, B737NG, B737 MAX
LOP	✦	✦	✦			A319/320/A320NEO, B737NG
SRG	✦	*				A319/320/A320NEO, B737NG
PDG	✦	*				A319/320/A320NEO, B737NG
MDC	✦	✦	✦			A319/320, B737NG
PKU	✦	*				A319/320, A320NEO, B737NG
PLM	✦	*				A319/320, A320NEO, B737NG
BPN	✦					A319/320, A320NEO, B737NG
HLP	*	✦	✦			REGULAR/CHARTERED FLIGHT
KJT	*	*	*			
PNK	*	*	*			
GTO			*			

* On Development

WORLDWIDE CUSTOMERS



46
CUSTOMERS

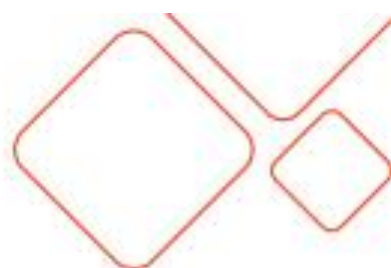
NETWORK



- ◆ Supported With GSE
- Supported With Bonded Store
- ★ Wheels & Brakes Shop

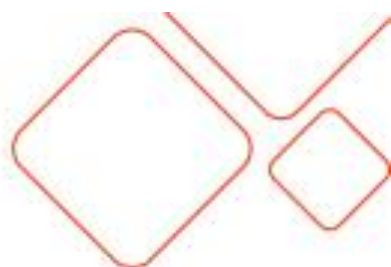
17
AIRPORTS

CONTACTS



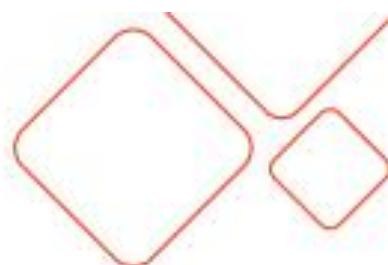
POSITION	PHONE / FAX / SITA	ADDRESS / E-MAIL
MCC 24 hours/7 days	(M) +62 812 1220 100 (T) +62 21 808 22266 (F) +62 21 808 22269 SITA: CGKMMXH	JAS Aero-Engineering Services Soekarno-Hatta International Airport Terminal D3-P01 Tangerang 15126 Indonesia Email: mcc@jas-aero.com
Ade Kurniawan Senior Manager Line Stations	(M) + 62 812 9965 745 (T) +62 21 808 22267 +62 21 808 22268 (F) +62 21 808 22269 SITA: CGKMMXH	JAS Aero-Engineering Services Soekarno-Hatta International Airport Terminal D3-P01 Tangerang 15126 Indonesia Email : ade.kurniawan@jas-aero.com
Teguh Sudiro MCC Manager	(M) +62 812 1220 100 (T) +62 21 808 22266 (F) +62 21 808 22269 SITA: CGKMMXH	JAS Aero-Engineering Services Soekarno-Hatta International Airport Terminal D3-P01 Tangerang 15126 Indonesia Email : teguh.sudiro@jas-aero.com
Mukti Syarifudin CGK Line Maintenance Manager	(M) +62 878 7012 3330 (T) +62 21 808 22267 SITA: CGKMMXH	JAS Aero-Engineering Services Soekarno-Hatta International Airport Terminal D3-P01 Tangerang 15126 Indonesia Email: mukti.syarif@jas-aero.com lmck@jas-aer.com
Arif Budisantosa Line Support & GSE Manager	(M) +62 813 1050 2635 (T) +62 21 808 22265 +62 21 808 22268 (F) +62 21 808 22269 SITA: CGKMMXH	JAS Aero-Engineering Services Soekarno-Hatta International Airport Terminal D3-P01 Tangerang 15126 Indonesia Email : arifbudisantosa@jas-aero.com
Wahyu Sulistiono Station Manager SUB	(M) +62 856 9366 7774 or +62 813 3089 750 (Duty Engineer) (T) +62 31 2986452 (F) +62 31 8667 635 SITA: SUBMMXH	JAS Aero-Engineering Services First Floor, Room F-1A.30 Juanda Int'l Airport - International Arrival Surabaya - Indonesia Email : wahyu.sulistiono@jas-aero.com lmsub@jas-aero.com
I Gede Saisnu Station Manager DPS	(M) +62 812 3814 223 or (M) +628123854399 (Duty Engineer) (T) + 62.361.9352941 (F) + 62.361.9352941 SITA: DPSMMXH	JAS Aero-Engineering Services Int'l Arrival B-25, Ngurah Rai Int'l Airport Denpasar Bali Tuban 80361 Bali Indonesia Email : ig.saisnu@jas-aero.com lmdps@jas-aero.com

CONTACTS



POSITION	PHONE / FAX / SITA	ADDRESS / E-MAIL
Mar'i Isa Umar Station Manager KNO	(M) +62 8126002458 (T) +62-61-88890371 (F) +62-61-88890371 SITA : MESMM0KH	JASAero-Engineering Services Room No S-1.3.4 and S-1.3.B Kualanamu International Airport Deli Serdang 22552, Indonesia Email : mari.isaumar@jas-aero.com lmmas@jas-aero.com
Aftah Arief Station Superintendent- PDG	(M) +62 813 63248105 (T) +62 751 819123 (F) +62 751 819141	JASAero-Engineering Services GSE Building Room 102 Minangkabau International Airport Padang - Sumatra Barat, Indonesia Email : lmpdg@jas-aero.com
R. Cecep Riswansyah Station Superintendent - PLM	(M) +62 821 5767 5745 +62 812 1487 7966 +62 8127133767 (Duty Engineer) (T) +62 71 138 5070 (F) +62 71 138 5070	JASAero-Engineering Services Sultan Mahmud Badarudin II International Airport GSE Building Palembang 30155, Indonesia Email : lmpm@jas-aero.com
Agus Pur Ariyanto Station Superintendent - SOC	(M) +62 813 2994 6466 (T) +62 271 781239 (F) +62 271 781239	JASAero-Engineering Services Ramp Area Building No Lt2-13 Adi Sumarmo International Airport Boyolali, Solo, Indonesia Email : lmsoc@jas-aero.com
Uus Mulyana Sumantri Station Superintendent - LOP	(M) +62 812 462 8265 (M) +62 817 574 4449 (T) + 62 370 615036 (F) + 62 370 615036	JASAero-Engineering Services Terminal Cargo Bandara, Lombok International Airport Praya, Lombok Tengah Nusa Tenggara Barat 83573 Email : lmami@jas-aero.com
Peter R.M.Wattimena Assistance Manager Station - BPN	(M) +62 821 5942 9938 (F) +62 542 765424 (F) +62 542 7577121	JASAero-Engineering Services Sultan Aji Muhammad Sulaiman Sepinggan International Airport Balikpapan, 76115 Email : peter.wattimena@jas-aero.com lmbpn@jas-aero.com
Ferdinand Sudjana Station Superintendent - MDC	(M) +62 813 4052 3406 +62 812 4309 488 (Duty Engineer) (T) +62 431 814334 (F) +62 431 814334	JASAero-Engineering Services Sam Ratulangi International Airport GF042, JIAA MARAMIS 95374 Manado-Sulawesi Utara Email : lmmdc@jas-aero.com

CONTACTS



POSITION	PHONE / FAX / SITA	ADDRESS / E-MAIL
Darmawan Priandono Station Superintendent - JOG	(M) +62 812 3632 115 (T) +62.274.4331665 (F) +62.274.4331665	JAS Aero-Engineering Services Adi Sutjipto International Airport Yogyakarta 55282, Indonesia Email : lmjog@jas-aero.com darmawan@jas-aero.com
Jefirman Station Superintendent - PKU	(M) +62 8127631 021 (T) +62 761 676780 (F) +62 761 676780	JAS Aero-Engineering Services Sultan Syarif Kasim Int'l Airport Pekanbaru, Indonesia Email : lmplu@jas-aero.com
Deny Siswanto Station Superintendent - BDO	(M) +62 815 1011 4072 (T) +62 22 6020759 (F) +62 22 6079096	JAS - Aero Engineering Services Husein Sastranegara International Airport Pajajaran St No. 156 Bandung 40174, Indonesia Bandung, 40174 Indonesia Email : lmndo@jas-aero.com
Widodo Station Superintendent - SRG	(M) +62 812 1704 841 (T) +62 24 7625169 (F) +62 247617625	JAS - Aero Engineering Service Ahmad Yani International Airport Airside Terminal Cargo Semarang, Indonesia Email : lmstrg@jas-aero.com
Station HLP	(T) +62 21 22855292 (admin & suport) (T) +62 21 2982 6050 (GSE & Mechanic)	JAS Aero-Engineering Services Komplek Pergudangan CAS & Perkantoran Sisi Udara Halim Perdanakusuma Airport Jakarta Timur - 13610, Indonesia Email : lmhlp@jas-aero.com
Muthmal Saleh Station Superintendent - UPG	(M) +62 813 407 27802 (T) +62 24 7617625 (F) +62 24 7617625	JAS Aero-Engineering Services Area Maintenance Building LM-6A Sultan Hasanuddin International Airport Makassar Sulawesi Selatan, Indonesia Email : lmupg@jas-aero.com
Jusup Idris Wheels & Brake Shop	(M) +62 812 242 5871	JAS Aero-Engineering Services Kawasan Pergudangan Paranglora Indah Blok E2 No. 2, Makassar Sulawesi Selatan 90241, Indonesia Email : jusup.idris@jas-aero.com



www.jas-aero.com